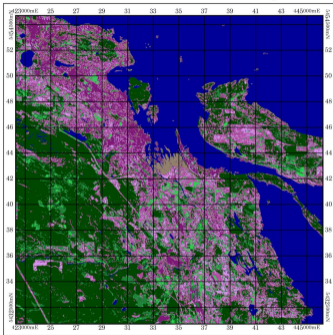


Human Settlement in Nanaimo/Ladysmith

Where have all the forests gone?

What this map attempts to depict is the overall impact of settlement within the Nanaimo/Ladysmith region. By assuming that the existing dense forest reasonably approximates pre-settlement canopy cover, any impacts have been categorized and highlighted by distinct colours. The end land use or cover is not necessarily of concern, since the map is only meant to portray total impacts, permanent and temporary, as opposed to end use.

Colour Legend



Warrick Baijusz
April 2012



Unsupervised IsoData Algorithm
048/026 September 21, 1999
UTM10U NADS83
UL: 420753mE 5456703mN
BR: 451383mE 5421243mN

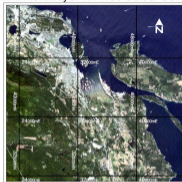


Land Use Change

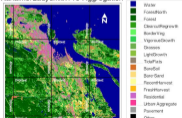
Dark green indicates thick canopy cover, which is most likely second-generation forest growth. Lighter green areas indicate older clearcuts that have begun to revegetate. Brighter green areas are more indicative of recent regrowth, either post-logging, agricultural harvest or as part of leisure activities. The brown colour represents tidal flats, or areas that are inundated by water from time to time.

The violet spectrum is used to indicate various levels of permanent or recent human activity. Lighter violet indicates either bare soil or lightly vegetated residential areas. Medium violet represents vegetative growth either on the borders of tree stands, or as altered vegetative cover such as recent clearcuts, grasses, and lawns. The darkest violet indicates more permanent changes, including roadways, parking lots, dense urban areas, and industrial areas.

Nanaimo/Ladysmith True Colour Comp.



Nanaimo/Ladysmith Pre-Aggregation



The results of the IsoData algorithm in PCI Geomatica's Unsupervised Classification routine are shown in this map, with modifications only to colour selection.